

**www.canarm.com**



APRIL 2024

# INDOOR DUCT VENTILATION

## Typical Applications:

- Restaurant make-up air
- General industrial exhaust
- Air mover in HVAC system
- Air transfer
- Rooftop filtered make-up air with horizontal discharge for restaurants, etc.
- Paint, glue or dust booth exhaust
- In-line ducted systems
- Warehouse ventilation
- Plant/Factory ventilation
- Distribution center ventilation
- Process exhaust

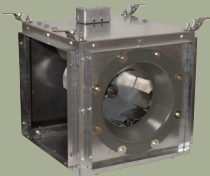


Twin Units provide up to twice the airflow of a single unit.



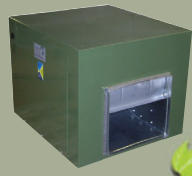
Energy Savings

GSQ-D



Backward Inclined Direct Inline Blower

200 & 9200



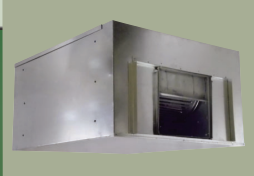
Forward Curved Inline Duct Blower

IDB



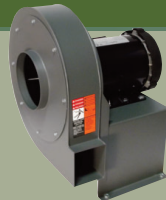
Galvanized Inline Duct Blower

IDL



Low Profile Inline Duct Blower

PW



Direct Drive Pressure Blower

DFRC-ES



Inline Duct Fan

400



Forward Curved Exhauster Belt Drive Utility Blower

IMF-B (Belt Drive)



Mixed Flow Fan

D



Direct Drive Radial Blade Blower

KE



Direct Drive Pressure Blower

DSQ-B (Belt Drive)

Currently only available in Canada



Backward Inclined Square Inline Blower

DPL (Flat Blade)  
DPL-AF (Air Foil Blade)



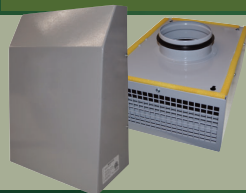
Plenum Fan

BTA/HTA/HTA (Belt Drive)  
DDA (Direct Drive)



Tube Axial Duct Fan

VCN



Outdoor Wall-Mounted Centrifugal Fan

VK PS



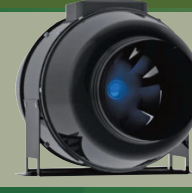
Dryer Booster Fan

Turbo Tube TT Turbo Tube Silent



Mixed Flow Fan

Turbo Tube Silent M



Mixed Flow Fan in Metal Noise Absorbing Case

VKM



Inline Centrifugal Metal Fan

VKP



Inline Centrifugal Fan Back Curved Impeller

CEP



Ultra Quiet Ceiling Exhausters

BPT



Bathroom Exhaust Fans

CBF/CBFI



Commercial Bathroom Fans

## ROOFTOP - EXHAUST

**Go green** with  
**HIGH EFFICIENCY ECsmart MOTORS**  
up to **70% ENERGY SAVINGS**



ALX-UD/ALX-UD-EC & ALX-UB



Upblast Direct & Belt Drive Spun Aluminum Exhauster

ALX-DD/ALX-DD-EC & ALX-DB



Downblast Direct & Belt Drive Spun Aluminum Exhauster



# ROOFTOP - EXHAUST

## Typical Applications:

- Plant/Factory/Warehouse ventilation
- Schools, hospitals & high rise apartments
- Foundry ventilation
- Distribution Center ventilation
- Upblast ventilation
- Rooftop heat extraction
- Bathroom area exhaust
- Industrial exhaust

HRE Currently only available in Canada



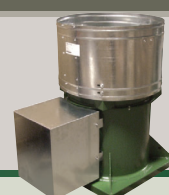
Horizontal Restaurant Exhauster

HTE



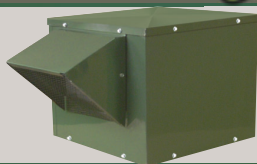
Hurricane Turbine Exhausters

RD/RB/RTA/RTA-SH



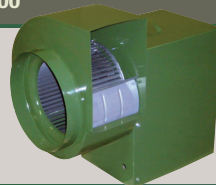
Direct Drive / Belt Drive Roof Exhauster  
RTA-SH - Smoke & Heat

300



Forward Curved Roof Exhauster

600



Forward Curved Exhauster Belt Drive Utility Blower

BI-RM (Restaurant Model) BI



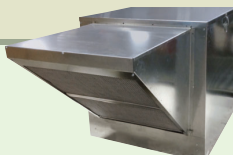
Belt Drive Utility Blower

# ROOFTOP - SUPPLY

## Typical Applications:

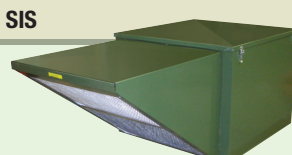
- Roof mounted filtered fresh air units

SIG



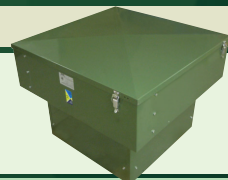
Side Intake Filtered Fresh Air Supply Units

SIS



Side Intake Filtered Fresh Air Supply Units

700



Filtered Fresh Air Supply Units

# WALL EXHAUST

## Typical Applications:

- Commercial & light duty industrial applications
- Factories, warehouses, gymnasiums, underground parking garages
- Farming applications
- Residential applications

XBL



Belt Drive Wall Exhaust Fans

XB

HV / HVA



Belt Drive Wall Fans  
24" - 60"  
Steel Blades /Aluminum Blades

ADD



Direct Drive Wall Fans  
Cast Iron Blades

DDP / DDS

Currently only available in Canada



Direct Drive Wall Fans  
Poly Blades / Steel Blades

XFS



Exhaust Shutter Fans  
12" - 24"

SD / SD-EC



Standard Wall Exhaust Fans - 8" - 48"

SD-XPF



Explosion Proof Standard Fans - 8" - 24"

AX



Shutter Mounted Fans with Built in Aluminum Shutters  
8" - 48"

AX-EC



Shutter Mounted Fans with Built in Aluminum Shutters  
8" - 20"

## WALL - SUPPLY

### Typical Applications:

- Commercial & light duty industrial supply applications
- Factories / Warehouses
- Underground parking garages

P



Supply Fans

SXB



Belt Drive Wall Supply Fans - 24" - 60"

## CIRCULATION

### Typical Applications:

- Industrial/commercial air circulation
- Winter destratification
- Summer cooling
- Large areas
- HVLS fans can be used in high moisture applications.

FANBOS



High Performance Ceiling Fans  
8' & 10'

DC



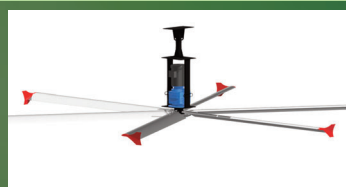
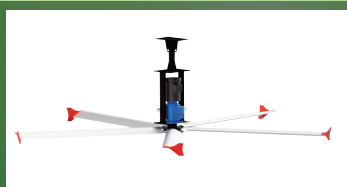
DC - Industrial Ceiling Fan  
White & Black - 48", 56" & 60"

CJF



Low Profile Jet Fan

HVLS FANS



High Volume, Low Speed Ceiling Fans - 6' to 24' with 3, 5, 6 or 8 blades

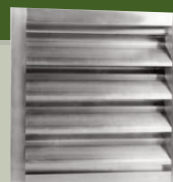
## DAMPERS & LOUVRES

### Typical Applications:

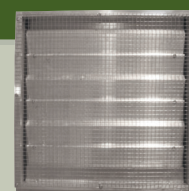
- Motorized shutters can be used for intake or exhaust.
- Aluminum construction will not rust
- Ideal for industrial/commercial applications.
- Available in many configurations and sizes to accommodate almost any application.



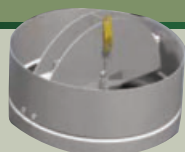
Backdraft Dampers /  
Motorized Backdraft Dampers



Fixed Louvres  
2", 4" & 6"



Operating Louvres



Round Ceiling Dampers  
Standard Construction



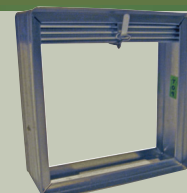
Aluminum Control Dampers  
Opposed & Parallel Blades



Steel Control Dampers  
Standard, Low Leakage & Heavy  
Duty Construction



Steel Round Control Dampers  
Standard & Low  
Leakage Construction



Fire Dampers  
Vertical & Horizontal

DISTRIBUTED BY



[www.bpc coils.com](http://www.bpc coils.com)

[sales@bpc coils.com](mailto:sales@bpc coils.com)

CANARM LTD. - Corporate Office  
2157 Parkdale Ave., PB Box 367 Brockville, ON  
Canada K6V 5V6  
Tel: (613) 342-5424 Fax: 1-800-263-4598

CANARM LTD. - USA Warehouse  
808 Commerce Park Drive  
Ogdensburg, New York, USA 13669  
Tel: 1-800-267-4427 Fax: 1-800-263-4598

Arthur Manufacturing Facility  
#7686 Concession 16, RR 4 Arthur, ON  
Canada N0G 1A0  
Tel: (519) 848-3910 Fax: (519) 848-3948

Montreal Distribution Center  
2555 Rue Bernard Lefebvre  
Laval, QC H7C 0A5 Canada  
Tel: 450.665.2535 Fax: 450.665.0910

[www.canarm.com](http://www.canarm.com)



[hvacsales@canarm.ca](mailto:hvacsales@canarm.ca)